

ILC – High Pressure Hygienic Fittings

The ILC range of hygienic / sanitary unions were designed as a high-pressure upgrade for the RJT union that is commonplace in the food, beverage and dairy industries.

The union retains the RJT thread form and the nut is interchangeable with the RJT union

The ILC union replaces the RJT O ring seal with a profiled seal that is similar in appearance to the Mini-Clamp seals used by ½" and ¾" clamp unions in BS4825 Part 3.

ILC males are not interchangeable with RJT males but do use the same nuts.

Nuts are available in both hexagonal and the round castle nut form.

The new seal form is crevice free and better suited to CIP applications. The design utilises a metal-to-metal contact above the seal, similar to the aseptic range of DIN11864 Form A fittings that Alchem Process also supply.

Materials:

A range of materials is offered to compliment your applications and including **Nitrile, EPDM, Viton and PTFE** for more extreme conditions.

Males and liners are offered in 316L and the nuts in 304SS

Sizes:

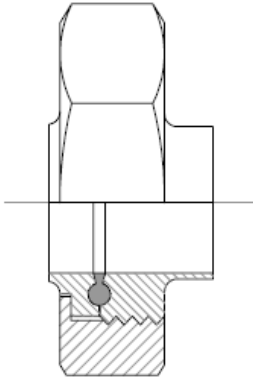
Available in a greater range of sizes than RJT, the ILC union is available from ½" to 4".

Dimensions are provided in good faith but may be subject to change, if dimensions are critical please call the office to confirm all sizes before placing an order.

DS ILC V 1.1

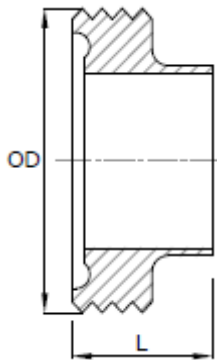
Page No: 1

ILC – Hygienic Union



Size	Complete Union Bore Size	Part No
1/2"	9.5	C060-A013
3/4"	15.9	C060-A019
1"	22.2	C060-A026
1.1/2"	34.9	C060-A038
2"	47.6	C060-A051
2.1/2"	60.3	C060-A064
3"	73.0	C060-A076
4"	97.6 (14 swg)	C060-A102

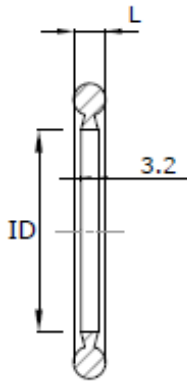
ILC – Weld Male



Size	OD	L	Part No
1/2"	22.0	16.0	C061-A013
3/4"	30.0	19.0	C061-A019
1"	45.7	21.5	C061-A026
1.1/2"	58.4	21.5	C061-A038
2"	72.7	21.5	C061-A051
2.1/2"	85.4	21.5	C061-A064
3"	98.1	21.5	C061-A076
4"	123.5	21.5	C061-A102

Dimensions are provided in good faith but may be subject to change, if dimensions are critical please call the office to confirm all sizes before placing an order.

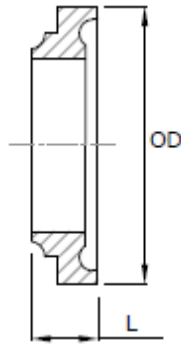
ILC - Seal



Size	ID	L	Part No
1/2"	9.5	-	C038-A013
3/4"	15.9	-	C038-A019
1"	22.2	6.4	C038-A026
1.1/2"	34.9	6.4	C038-A038
2"	47.6	6.4	C038-A051
2.1/2"	60.3	6.4	C038-A064
3"	73.0	6.4	C038-A076
4"	97.5	6.4	C038-A102

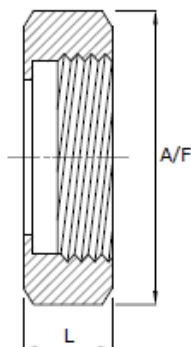
Materials available:
 1. E - EPDM
 2. T - PTFE Solid

ILC - Weld Liner



Size	OD	L	Part No
1/2"	19.8	16.0	C063-A013
3/4"	27.8	19.0	C063-A019
1"	41.3	21.5	C063-A026
1.1/2"	54.0	21.5	C063-A038
2"	66.6	21.5	C063-A051
2.1/2"	79.4	21.5	C063-A064
3"	92.1	21.5	C063-A076
4"	117.5	21.5	C063-A102

ILC - Hex Nut



Size	A/F	L	Part No
1/2"	27.8	13.4	C065-A013
3/4"	38.0	16.0	C065-A019
1"	50.8	22.2	C065-A026
1.1/2"	65.0	22.2	C065-A038
2"	79.4	22.2	C065-A051
2.1/2"	92.1	22.2	C065-A064
3"	104.8	22.2	C065-A076
4"	130.2	22.2	C065-A102

Dimensions are provided in good faith but may be subject to change, if dimensions are critical please call the office to confirm all sizes before placing an order.