

209X – Graduated Flow Control Valve

The valve has a graduated knurled barrel that allows the operator to make sensitive adjustments to the flow and that can be repeated again and again. Indeed when large and regular volumes are delivered a flow control chart can be calculated to ensure complete repeatability.

The valve body is manufactured from a solid 316L stainless steel bar for maximum strength while the internal stem is chrome plated to reduce friction and galling. The internal seal is supplied in EPDM rubber as standard.

The standard internal finish is 120 Grit (0.8 μ M Ra) with higher finishes available on request. The maximum working pressure is 15 Bar.

Size range: 1" to 3"

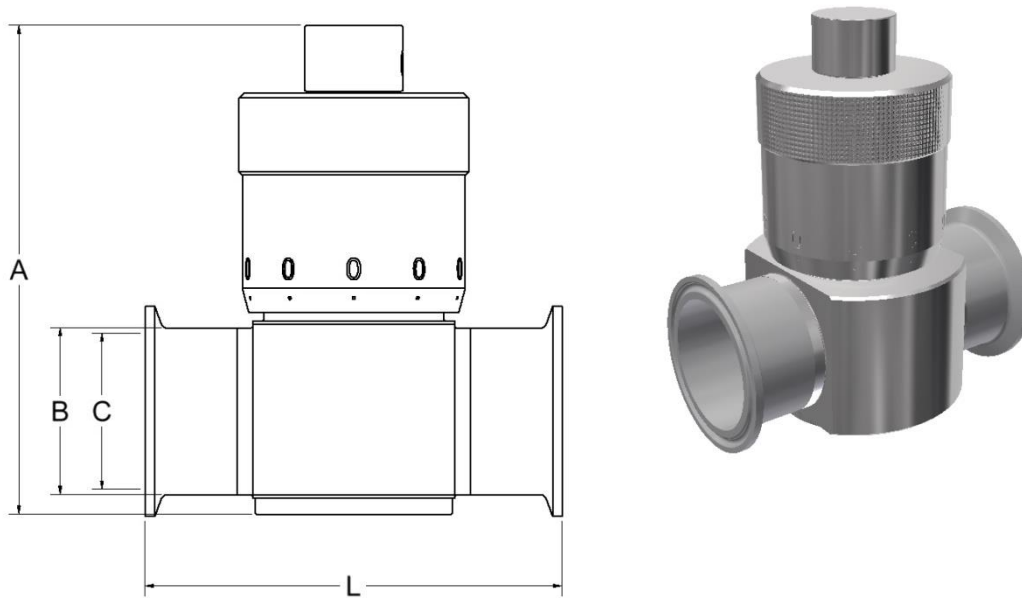
End Connections: Plain weld end, Clamp, RJT, IDF, DIN 11851, ILC and SMS

Technical Data:

- Maximum working pressure 15 Bar
- Temperature range -10°C to +100°C
- EPDM O Rings
- Machined from solid Bar
- Chrome Plated Stainless Steel Stem
- Surface finish 0.8 μ M
- Material certification to EN10204 3.1



Graduated Flow Control Valve –309X Clamp Ferrule Ends BS

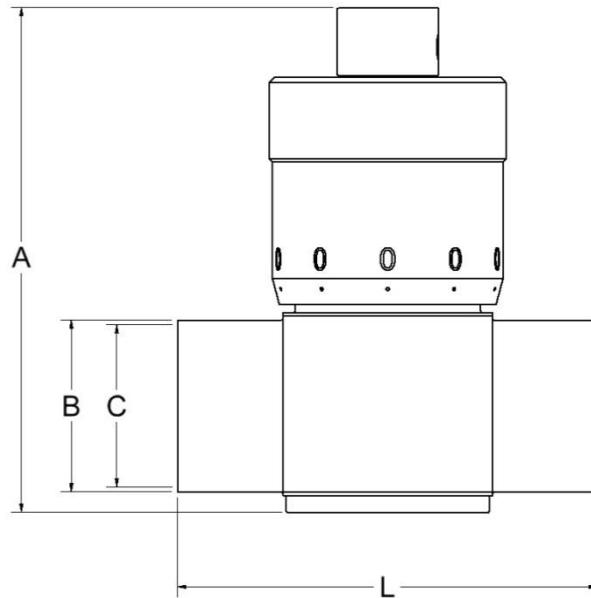


Size	A	B	C	L	Part Number
1"	127	50.5	22.2	100	309X-A026
1.1/2"	140	50.5	34.9	117	309X-A038
2"	165	64.0	47.6	127	309X-A051
2.1/2"	200	77.0	60.3	140	309X-A064
3"	253	91.0	73.0	152	309X-A076

Technical Data:

- Maximum working pressure 15 Bar
- Temperature range -10°C to +100°C
- EPDM O Rings
- Machined from solid Bar
- Chrome Plates Stainless Steel Stem
- Surface finish 0.8µM
- Material certification to EN10204 3.1

**Graduated Flow Control Valve –209X
Plain Ended Butt Weld BS**

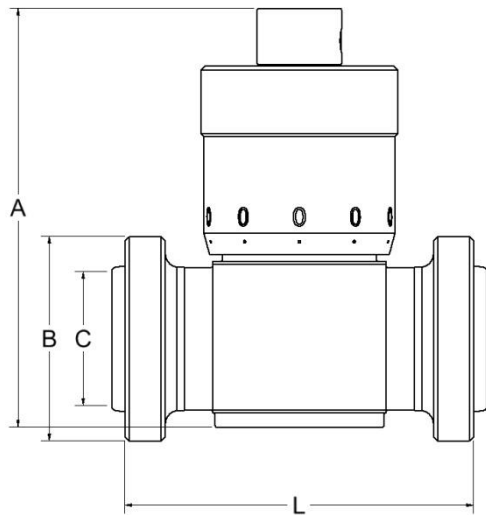


Size	A	B	C	L	Part Number
1"	126	25.4	22.2	83	209X-A026
1.1/2"	165	38.1	34.9	100	209X-A038
2"	200	50.8	47.6	124	209X-A051
2.1/2"	230	63.5	60.3	133	209X-A064
3"	274	76.2	73.0	145	209X-A076

Technical Data:

- Maximum working pressure 15 Bar
- Temperature range -10°C to +100°C
- EPDM O Rings
- Machined from solid Bar
- Chrome Plated Stainless Steel Stem
- Surface finish 0.8µM
- Material certification to EN10204 3.1

Graduated Flow Control Valve -509X RJT Male BS

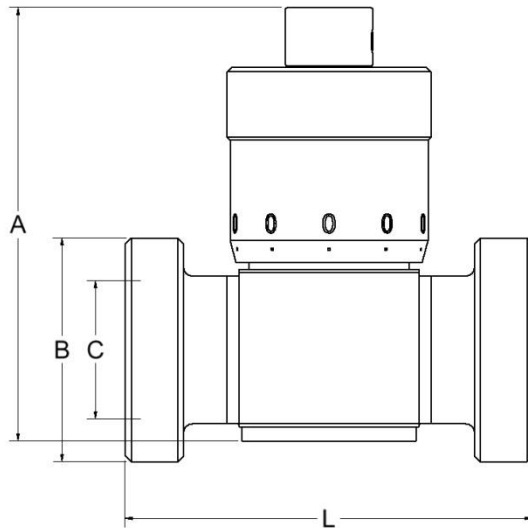


Size	A	B	C	L	Part Number
1"	126	46 - 8	22.2	97	509X-A026
1.1/2"	165	58 - 8	34.9	114	509X-A038
2"	200	73 - 6	47.6	124	509X-A051
2.1/2"	230	85 - 6	60.3	137	509X-A064
3"	274	98 - 6	73.0	149	509X-A076

Technical Data:

- Maximum working pressure 15 Bar
- Temperature range -10°C to +100°C
- EPDM O Rings
- Machined from solid Bar
- Chrome Plated Stainless Steel Stem
- Surface finish 0.8µM
- Material certification to EN10204 3.1

Graduated Flow Control Valve –609X DIN11851 Male



Size	A	B	C	L	Part Number
DN25	127	52 - 6	22.2	101	609X-A025
DN32	140	58 - 6	31	114	609X-A032
DN40	165	65 - 6	34.9	126	609X-A040
DN50	200	78 - 6	47.6	140	609X-A050
DN65	253	95 - 6	60.3	167	609X-A065

Technical Data:

- Maximum working pressure 15 Bar
- Temperature range -10°C to +100°C
- EPDM O Rings
- Machined from solid Bar
- Chrome Plates Stainless Steel Stem
- Surface finish 0.8µM
- Material certification to EN10204 3.1