

Plain Ended Welding Fittings BS 4825 Part 2

Alchem offer a wide range of plain ended weld fittings to suit both hygienic and pharmaceutical applications. These include bends, tees, and reducers, both concentric and eccentric. We also offer a wide range Y-Pieces, and Swept Bends, Swept Tees and Crosses, fabricated to suit the customers requirements.

Extended weld fittings are also offered to suit orbital welding techniques and to meet the requirements of the ASME BPE 2002 standard for pharmaceutical installations. We can also offer pharmaceutical fittings in DIN 11852 including Bends, Tees, Reducers and Manifolds.

Specially fabricated products are also offered in addition to non-standard bends tees, manifolds and reducers.

We can also provide large rolled bends with up to 1.0 Metre Bend Radius, as used in sugar and granule transfer systems.

Related Products:

- Fabrication facility for fully welded products
- 90° Bends in 1D, 1.5D, 2D and 3D radius
- Y Pieces and Swept Bends
- Jacketed Pipework including Bends and Tees
- Weld Rings for Jacket assembly
- Rolled Bends up to 1.0 Metre Diameter
- Equal Tees, Pulled Tees, Reducing Tees and Manifolds
- Filters, Screens and Sampling Equipment



Full range of Butterfly Valves, Ball Valves, Pressure Relief and Non-Return

Associated Standards:

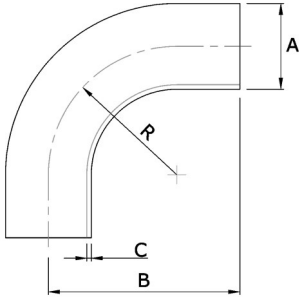
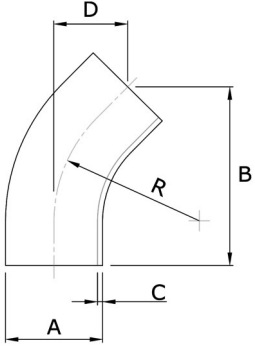
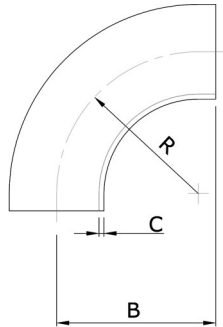
- | | | |
|------------------|---|--|
| ● BS 4825 Part 1 | - | Stainless Steel Tube for Food Industry and Hygienic Applications |
| ● BS 4825 Part 2 | - | Stainless Steel Bends and Tees for the Food Industry |
| ● ASTM A270 | - | Stainless Steel Tube for Sanitary, Dairy and Food Industries |
| ● ASTM A269 | - | Stainless Steel Tubes for General Duties |
| ● ASME BPE | - | Pharmaceutical Tube, Imperial |
| ● ISO 2037 | - | Stainless Steel Tubes for the Food Industry |
| ● ISO 1127 | - | Stainless Steel Tubes |
| ● ISO 2851 | - | Stainless Steel Bends and Tees for the Food Industry |

Dimensions are provided in good faith but may be subject to change; if dimensions are critical please call the office to confirm all sizes before placing an order.

[DS Plain Ended Fittings V1.4](#)

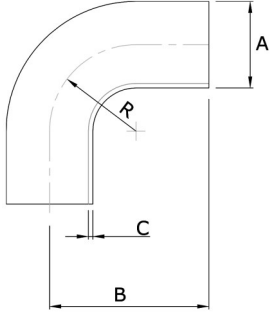
[Page No: 1](#)

Plain Ended Weld Fittings – Imperial

Bends R=1.5 D - 90° BS Long - Polished 	Size	A	B	C	R	Part No
	½"	12.90	60.0	1.6	25.0	2040-A013
	¾"	19.05	60.0	1.6	32.0	2040-A019
	1"	25.40	65.0	1.6	37.5	2040-A026
	1¼"	31.80	85.0	1.6	51.0	2040-A031
	1½"	38.10	85.0	1.6	57.0	2040-A038
	2"	50.80	110.0	1.6	76.5	2040-A051
	2½"	63.50	135.0	1.6	95.3	2040-A064
	3"	76.10	155.0	1.6	114.0	2040-A076
	4"	101.60	195.0	2.0	153.0	2040-A102
Descaled finish also available						
Bends R=1.5 D - 45° BS Short - Polished 	Size	A	B	C	D	Part No
	1"	25.4	51.5	1.6	21.3	2046-A026
	1¼"	-	-	-	-	2046-A031
	1½"	38.1	70.5	1.6	29.2	2046-A038
	2"	50.8	100.0	1.6	41.5	2046-A051
	2½"	63.5	130.0	1.6	53.8	2046-A064
	3"	76.1	154.0	1.6	63.8	2046-A076
	4"	101.6	209.0	2.0	86.4	2046-A102
Descaled finish also available						
Bends R=1.5 D - 90° BS Short - Polished 	Size	A	B	C	R	Part No
	1"	25.4	44	1.6	37.5	2041-A026
	1½"	38.1	64	1.6	57.0	2041-A038
	2"	50.8	89	1.6	76.5	2041-A051
	2½"	63.5	114	1.6	95.3	2041-A064
	3"	76.1	134	1.6	114.0	2041-A076
	4"	101.6	174	2.0	153.0	2041-A102
Descaled finish also available						

Dimensions are provided in good faith but may be subject to change; if dimensions are critical please call the office to confirm all sizes before placing an order.

Plain Ended Weld Fittings – Imperial

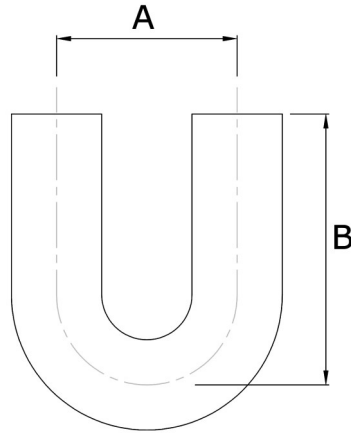
 <p>Bends R=1.0 D - 90° - Polished</p>	Size	A	B	C	R	Part No
	1"	25.4	55	1.6	25	2049-A026
	1½"	38.1	70	1.6	38	2049-A038
	2"	50.8	82	1.6	51	2049-A051
	2½"	63.5	105	1.6	64	2049-A064
	3"	76.2	110	1.6	76	2049-A076
	4"	-	-	-	-	2049-A102
Descaled finish also available						

Dimensions are provided in good faith but may be subject to change; if dimensions are critical please call the office to confirm all sizes before placing an order.

[DS Plain Ended Fittings V1.4](#)

Page No: 3

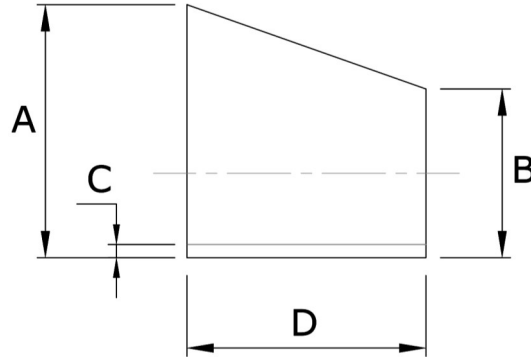
**Welding Fittings – Return 180° Long – 316L – Polished
OD**



Size	A	B	Part No
1"	76.2	76.2	204H-A026
1½"	114.3	114.3	204H-A038
2"	152.4	127	204H-A051
2½"	190.5	146.1	204H-A064
3"	228.6	165.1	204H-A076
4"	304.8	215.9	204H-A102

Dimensions are provided in good faith but may be subject to change; if dimensions are critical please call the office to confirm all sizes before placing an order.

Welding Fittings – Eccentric Reducer – 316L - Polished



Size	A	B	C	D	Part No
3/4" x 1/2"	19.05	12.7	1.6	15	2054-A019-013
1" x 1/2"	25.4	12.7	1.6	25	2054-A026-013
1" x 3/4"	25.4	19.1	1.6	15	2054-A026-019
1 1/2" x 1/2"	38.1	12.7	1.6	42	2054-A038-013
1 1/2" x 3/4"	38.1	19.05	1.6	44	2054-A038-019
1 1/2" x 1"	38.1	25.4	1.6	36	2054-A038-026
2" x 1/2"	50.8	12.7	1.6	79	2054-A051-013
2" x 3/4"	50.8	19.05	1.6	68	2054-A051-019
2" x 1"	50.8	25.4	1.6	55	2054-A051-026
2" x 1 1/2"	50.8	38.1	1.6	34	2054-A051-038
2 1/2" x 1"	63.5	25.4	1.6	76	2054-A064-026
2 1/2" x 1 1/2"	63.5	38.1	1.6	65	2054-A064-038
2 1/2" x 2"	63.5	50.8	1.6	34	2054-A064-051
3" x 1"	76.2	25.4	1.6	101	2054-A076-026
3" x 1 1/2"	76.2	38.1	1.6	76	2054-A076-038
3" x 2"	76.2	50.8	1.6	66	2054-A076-051
3" x 2 1/2"	76.2	63.5	1.6	42	2054-A076-064
4" x 1"	101.6	25.4	2.0	156	2054-A102-026
4" x 1 1/2"	101.6	38.1	2.0	130	2054-A102-038
4" x 2"	101.6	50.8	2.0	100	2054-A102-051
4" x 2 1/2"	101.6	63.5	2.0	73	2054-A102-064
4" x 3"	101.6	76.2	2.0	72	2054-A102-076
5" x 4"	M.T.O	-	-	-	2054-A129-102
6" x 2"	M.T.O	-	-	-	2054-A154-051
6" x 3"	M.T.O	-	-	-	2054-A154-076
6" x 4"	-	-	-	-	2054-A154-102

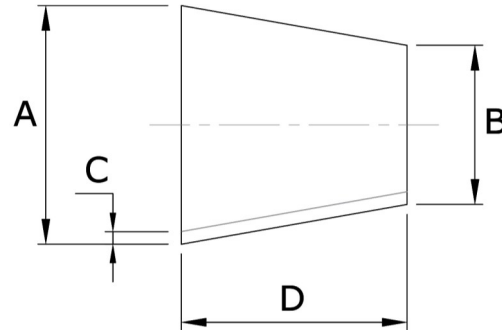
*Other options including 1 1/4" and metric variations available on request

Descaled finish also available

*M.T.O – Made To Order

Dimensions are provided in good faith but may be subject to change; if dimensions are critical please call the office to confirm all sizes before placing an order.

Welding Fittings – Concentric Reducer – 316L - Polished



Size	A	B	C	D	Part No
¾" x ½"	19.05	12.7	1.6	14	2051-A019-013
1" x ½"	25.4	12.7	1.6	20	2051-A026-013
1" x ¾"	25.4	19.1	1.6	13	2051-A026-019
1½" x ½"	38.1	12.7	1.6	44	2051-A038-013
1½" x ¾"	38.1	19.05	1.6	44	2051-A038-019
1½" x 1"	38.1	25.4	1.6	28	2051-A038-026
2" x ½"	50.8	12.7	1.6	61	2051-A051-013
2" x ¾"	50.8	19.05	1.6	66	2051-A051-019
2" x 1"	50.8	25.4	1.6	53	2051-A051-026
2" x 1½"	50.8	38.1	1.6	38	2051-A051-038
2½" x ½"	M.T.O	-	1.6	-	2051-A064-013
2½" x ¾"	M.T.O	-	1.6	-	2051-A064-019
2½" x 1"	63.5	25.4	1.6	80	2051-A064-026
2½" x 1½"	63.5	38.1	1.6	60	2051-A064-038
2 ½" x 2"	63.5	50.8	1.6	39	2051-A064-051
3" x 1"	76.2	25.4	1.6	106	2051-A076-026
3" x 1½"	76.2	38.1	1.6	81	2051-A076-038
3" x 2"	76.2	50.8	1.6	64	2051-A076-051
3" x 2½"	76.2	63.5	1.6	40	2051-A076-064
4" x 1"	101.6	25.4	2.0	160	2051-A102-026
4" x 1½"	101.6	38.1	2.0	133	2051-A102-038
4" x 2"	101.6	50.8	2.0	107	2051-A102-051
4" x 2½"	101.6	63.5	2.0	78	2051-A102-064
4" x 3"	101.6	76.2	2.0	53	2051-A102-076
5" x 3"	M.T.O	-	-	-	2051-A129-076
5" x 4"	M.T.O	-	-	-	2051-A129-102
6" x 2½"	M.T.O	-	-	-	2051-A154-064
6" x 3"	M.T.O	-	-	-	2051-A154-076
6" x 4"	M.T.O	-	-	-	2051-A154-102
6" x 5"	M.T.O	-	-	-	2051-A154-129
8" x 3"	M.T.O	-	-	-	2051-A204-076

*Other options including 1¼" and metric variations available on request

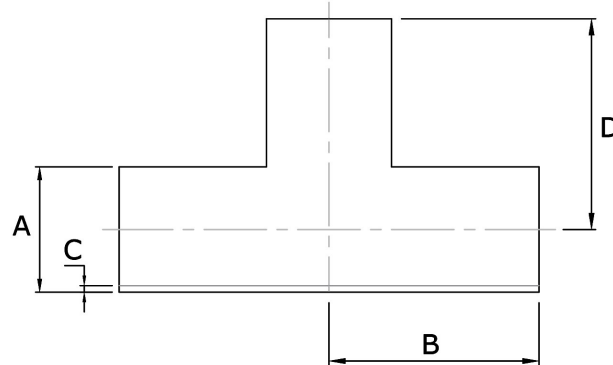
Descaled finish also available

*M.T.O – Made To Order

Dimensions are provided in good faith but may be subject to change; if dimensions are critical please call the office to confirm all sizes before placing an order.

Welding Fittings – Tees

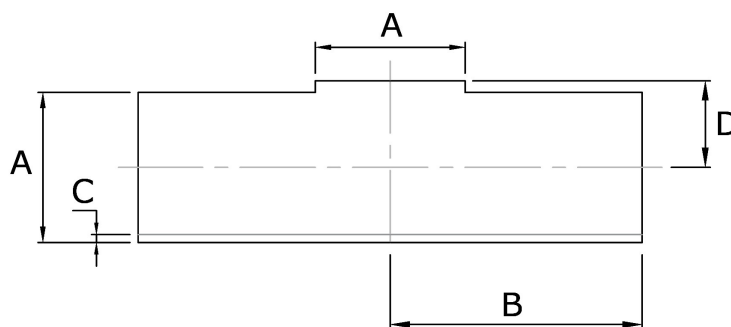
Welding Fittings – Equal Tee – 316L – Polished OD



Size	A	B	C	D	Part No
1/2"	12.70	38	1.6	38	204P-A013
3/4"	19.05	35	1.6	35	204P-A019
1"	25.40	44	1.6	44	204P-A026
1 1/2"	38.10	64	1.6	64	204P-A038
2"	50.80	89	1.6	89	204P-A051
2 1/2"	63.50	114	1.6	114	204P-A064
3"	76.20	134	1.6	134	204P-A076
4"	101.60	174	2.0	174	204P-A102

Descaled finish also available

Welding Fittings – Pulled Equal Tee – 316L – Polished OD

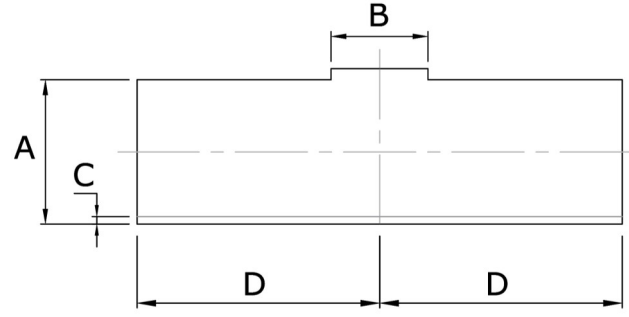


Size	A	B	C	D	Part No
1"	25.4	44	1.6	14	204T-A026
1 1/2"	38.1	64	1.6	22	204T-A038
2"	50.8	89	1.6	29	204T-A051
2 1/2"	63.5	114	1.6	35	204T-A064
3"	76.2	134	1.6	41	204T-A076
4"	101.6	174	2.0	55	204T-A102

Descaled finish also available

Dimensions are provided in good faith but may be subject to change; if dimensions are critical please call the office to confirm all sizes before placing an order.

Welding Fittings – Pulled Reducing Tee – 316L – Polished OD



Size	A	B	C	D	Part No
1" x 1/2"	25.4	12.7	1.6	-	204V-A026-013
1" x 3/4"	25.4	19.1	1.6	-	204V-A026-019
1 1/2" x 1/2"	38.1	12.7	1.6	-	204V-A038-013
1 1/2" x 3/4"	38.1	19.1	1.6	-	204V-A038-019
1 1/2" x 1"	38.1	25.4	1.6	64	204V-A038-026
2" x 1/2"	50.8	12.7	1.6	-	204V-A051-013
2" x 3/4"	50.8	19.1	1.6	-	204V-A051-019
2" x 1"	50.8	25.4	1.6	89	204V-A051-026
2" x 1 1/2"	50.8	38.1	1.6	89	204V-A051-038
2 1/2" x 1/2"	63.5	12.7	1.6	-	204V-A064-013
2 1/2" x 3/4"	63.5	19.1	1.6	-	204V-A064-019
2 1/2" x 1"	63.5	25.4	1.6	114	204V-A064-026
2 1/2" x 1 1/2"	63.5	38.1	1.6	114	204V-A064-038
2 1/2" x 2"	63.5	50.8	1.6	114	204V-A064-051
3" x 1/2"	76.2	12.7	1.6	-	204V-A076-013
3" x 3/4"	76.2	19.1	1.6	-	204V-A076-019
3" x 1"	76.2	25.4	1.6	134	204V-A076-026
3" x 1 1/2"	76.2	38.1	1.6	134	204V-A076-038
3" x 2"	76.2	50.8	1.6	134	204V-A076-051
3" x 2 1/2"	76.2	63.5	1.6	134	204V-A076-064
4" x 1/2"	-	-	-	-	204V-A102-013
4" x 3/4"	-	-	-	-	204V-A102-019
4" x 1"	101.6	25.4	2.0	174	204V-A102-026
4" x 1 1/2"	101.6	38.1	2.0	174	204V-A102-038
4" x 2"	101.6	50.8	2.0	174	204V-A102-051
4" x 2 1/2"	101.6	63.5	2.0	174	204V-A102-064
4" x 3"	101.6	76.2	2.0	174	204V-A102-076

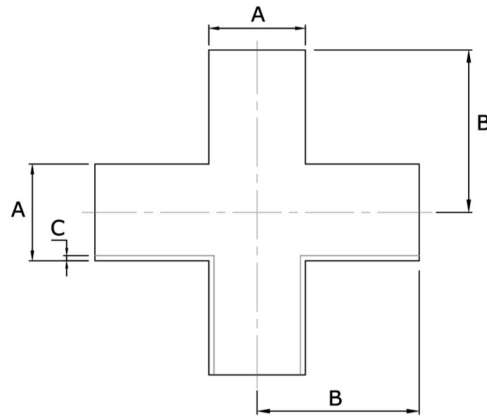
*Other options including 1 1/4" and metric variations available on request

Descaled finish also available

Dimensions are provided in good faith but may be subject to change; if dimensions are critical please call the office to confirm all sizes before placing an order.

Welding Fittings – Crosses

Welding Fittings – Equal Cross – 316L Polished OD

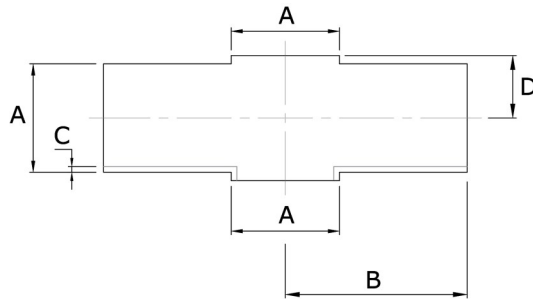


Size	A	B	C	Part No
1"	25.4	44	1.5	204X-A026
1½"	38.1	64	1.5	204X-A038
2"	50.8	89	1.5	204X-A051
2½"	63.5	114	1.5	204X-A064
3"	76.2	134	1.5	204X-A076
4"	101.6	174	2.0	204X-A102

Descaled finish also available

Dimensions are provided in good faith but may be subject to change; if dimensions are critical please call the office to confirm all sizes before placing an order.

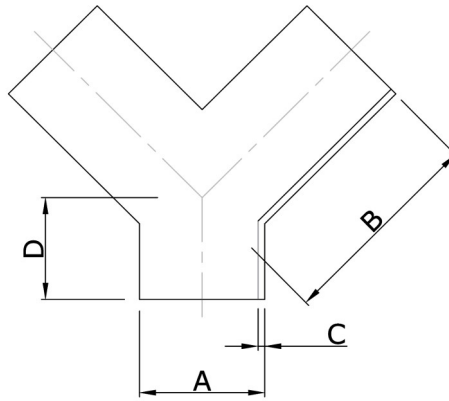
**Welding Fittings – Pulled Cross – 316L
Polished OD**



Size	A	B	C	D	Part No
1"	25.4	44	1.5	15	204X-A026
1½"	38.1	64	1.5	22	204X-A038
2"	50.8	89	1.5	28	204X-A051
2½"	63.5	114	1.5	35	204X-A064
3"	76.2	134	1.5	41	204X-A076
4"	101.6	174	2.0	54	204X-A102

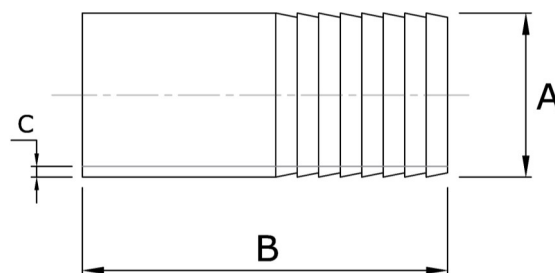
Dimensions are provided in good faith but may be subject to change; if dimensions are critical please call the office to confirm all sizes before placing an order.

Welding Fittings – Equal Y-Piece – 316L Polished OD



Size	A	B	C	D	Part No
1"	25.4	44	1.5	22	204Y-A026
1½"	38.1	64	1.5	31	204Y-A038
2"	50.8	89	1.5	44	204Y-A051
2½"	63.5	114	1.5	58	204Y-A064
3"	76.2	134	1.5	67	204Y-A076
4"	101.6	174	2.0	85	204Y-A102

Welding Fittings – Plain Hosetail – 316L Polished OD



Size	A	B	C	Part No
½"	12.70	60	1.5	2059-A013
¾"	19.05	60	1.5	2059-A019
1"	25.40	80	1.5	2059-A026
1½"	38.10	85	1.5	2059-A038
2"	50.80	85	1.5	2059-A051
2½"	63.50	95	1.5	2059-A064
3"	76.20	100	1.5	2059-A076
4"	101.60	120	2.0	2059-A102

Dimensions are provided in good faith but may be subject to change; if dimensions are critical please call the office to confirm all sizes before placing an order.