

## Oval Manways

Alchem Process Ltd offers a comprehensive range of inward and outward opening oval manways and process inspection hatches.

Oval manways range in size from the 165mm x 300mm outward opening manway used on many vegetable washing machines for cleaning and inspection, to the large inward opening silo inspection hatches at 450mm x 560mm.

The 440mm x 540mm "In to Out" Manway is our most popular design and is extensively used in the brewing and dairy industries. This manway has also proved to be very popular throughout the world in the wine industry, where it has been used for storage and fermentation vessels.

The range has recently been expanded to include high pressure options:

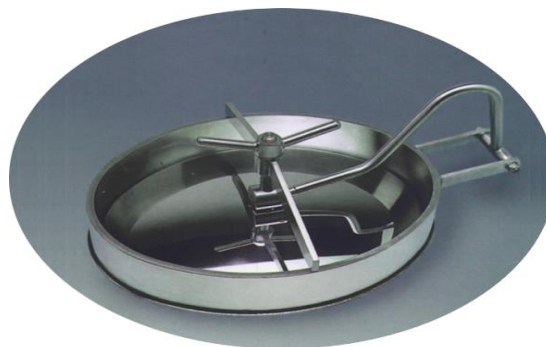
- 370 x 480mm internally opening Manway with up to 15 Bar working pressure

We offer 4 Bar, 9 Bar and 15 Bar oval manways with TUV certification along with our standard range of circular manways which are approved to PED 97/23/CE.

Designed for side and bottom mounting applications, these manways are often fitted to large storage silos, autoclaves and process vessels.

### Options:

- Flush fitting neck rings for use on flat surfaces
- Special neck rings offered in various heights
- Standard material options in 316L and 304 stainless steel
- Material certificates to EN 10204 3.1
- Mild steel high pressure bolted oval manways
- Sizes from 150mm x 290mm through to the 520mm x 420mm
- 15 Bar Rated – Oval manways with TUV certification
- Fully polished lids in 316L and 304L materials
- Swivel In and out style manways available in 520 x 420mm
- Special neck rings available for glass fibre and concrete tanks
- Alternative hinge mechanisms allow vertical and horizontal installation
- FDA approved seals in EPDM, Silicone, <sup>1</sup>Viton®/FKM or Nitrile



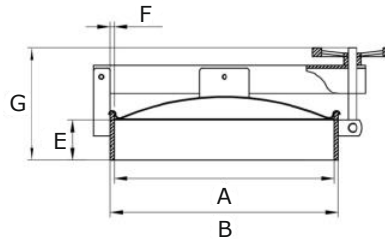
Dimensions are provided in good faith but may be subject to change, if dimensions are critical please call the office to confirm all sizes before placing an order.

[DS Oval Manways V 1.3](#)

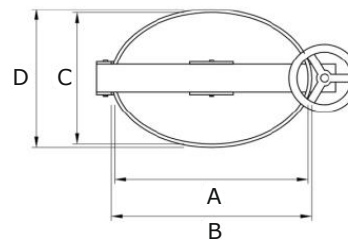
<sup>1</sup>Viton® is a registered trade mark of Dupont Dow Elastomer.

Page No: 1

## M126 – Oval Manway – Outward Opening



Section Detail



Plan Detail

A (mm)	B (mm)	C (mm)	D (mm)	E (mm)	F (mm)	G (mm)	H (mm)	Working Pressure Range (bar)	Weight (kg)	Part No
440	456	310	326	80	8	242	~	-1.0 / +0.7	14.0	M126-A13-3101
477	493	380	396	80	8	273	~	-1.0 / +0.5		M126-A25-3801

**Materials:**

1. M126-A: 316L Stainless Steel
2. M126-C: 304L Stainless Steel

**Other materials also available:**

1. L – Natural Rubber
2. E – EPDM
3. N – Nitrile
4. V – FKM

Lid thickness: 2 mm

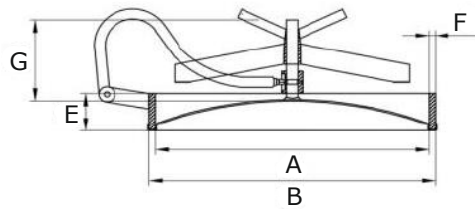
Dimensions are provided in good faith but may be subject to change, if dimensions are critical please call the office to confirm all sizes before placing an order.

DS Oval Manways V 1.3

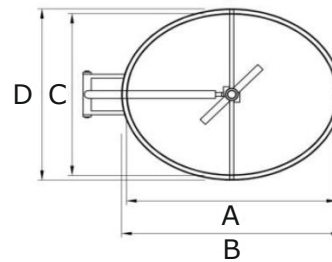
\*Viton® is a registered trade mark of Dupont Dow Elastomer.

Page No: 2

## M125 – Oval Manway – Inward Opening (In to Out)



Section Detail



Plan Detail

A (mm)	B (mm)	C (mm)	D (mm)	E (mm)	F (mm)	G (mm)	H (mm)	Working Pressure Range (bar)	Weight (kg)	Part No
518	542	418	442	60	12	243	~	8.0	20.0	<a href="#">M125-A15-4181</a>
518	542	418	442	100	12	~	~	8.0	26.0	<a href="#">M125-A16-4181</a>
522	542	422	442	100	10	~	~	4.0	~	<a href="#">M125-A16-4221</a>
518	542	418	442	120	12	~	~	8.0	30.0	<a href="#">M125-A16-4182</a>
518	542	418	442	160	12	~	~	8.0	32.0	<a href="#">M125-A16-4183</a>
560	580	450	470	100	10	~	~	4.0	27.0	<a href="#">M125-A29-4501</a>
560	584	450	474	100	12	~	~	4.0	29.0	<a href="#">M125-A29-4502</a>

**Materials:**

1. M125-A: 316L Stainless Steel
2. M125-C: 304L Stainless Steel

**Other materials also available:**

1. L – Natural Rubber
2. E – EPDM
3. N – Nitrile
4. V – FKM

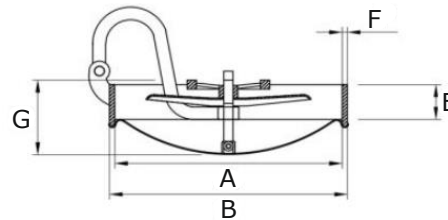
Dimensions are provided in good faith but may be subject to change, if dimensions are critical please call the office to confirm all sizes before placing an order.

[DS Oval Manways V 1.3](#)

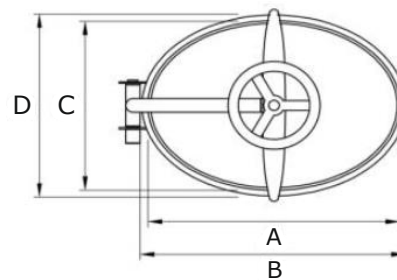
<sup>1</sup>Viton® is a registered trade mark of Dupont Dow Elastomer.

Page No: 3

## M125 – Oval Manway – Inward Opening



Section Detail



Plan Detail

A (mm)	B (mm)	C (mm)	D (mm)	E (mm)	F (mm)	G (mm)	H (mm)	Working Pressure Range (bar)	Weight (kg)	Part No
435	455	310	330	70	10	150	~	3.0	12.0	M125-A06-3101
440	456	310	326	60	8	-	~	3.0	9.0	M125-A07-3101

**Materials:**

1. M125-A: 316L Stainless Steel
2. M125-C: 304L Stainless Steel

**Other materials also available:**

1. L – Natural Rubber
2. E – EPDM
3. N – Nitrile
4. V – FKM

Lid thickness: 2 mm

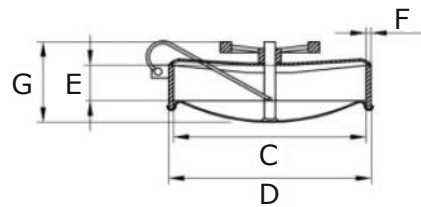
Dimensions are provided in good faith but may be subject to change, if dimensions are critical please call the office to confirm all sizes before placing an order.

DS Oval Manways V 1.3

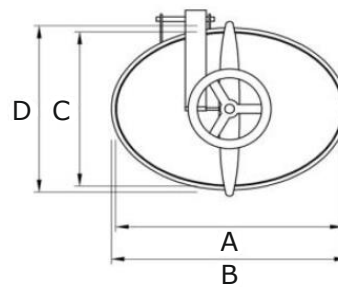
<sup>1</sup>Viton® is a registered trade mark of Dupont Dow Elastomer.

Page No: 4

## M125 – Oval Manway – Inward Opening



Section Detail



Plan Detail

A (mm)	B (mm)	C (mm)	D (mm)	E (mm)	F (mm)	G (mm)	H (mm)	Working Pressure Range (bar)	Weight (kg)	Part No
440	456	310	326	60	8	135	~	3.0	9.0	M125-A08-3101

**Materials:**

1. M125-A: 316L Stainless Steel
2. M125-C: 304L Stainless Steel

**Other materials also available:**

1. L – Natural Rubber
2. E – EPDM
3. N – Nitrile
4. V – FKM

Lid thickness: 2 mm

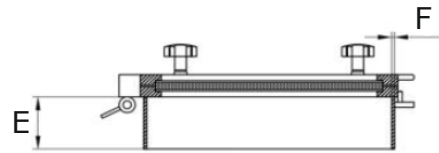
Dimensions are provided in good faith but may be subject to change, if dimensions are critical please call the office to confirm all sizes before placing an order.

DS Oval Manways V 1.3

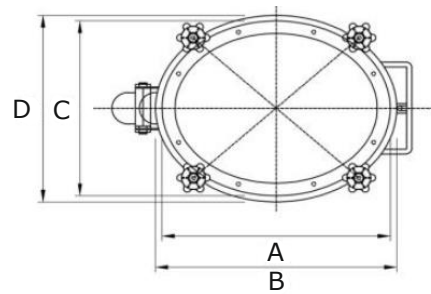
<sup>1</sup>Viton® is a registered trade mark of Dupont Dow Elastomer.

Page No: 5

## M126 – Oval Manway with Sight Glass – Outward Opening



Section Detail



Plan Detail

A (mm)	B (mm)	C (mm)	D (mm)	E (mm)	F (mm)	G (mm)	H (mm)	Working Pressure Range (bar)	Weight (kg)	Part No
456	468	362	374	100	6	~	~	-1.0 / +1.0	26.0	M126-A28-3621

**Materials:**

1. M126-A: 316L Stainless Steel
2. M126-C: 304L Stainless Steel

**Other materials also available:**

1. L – Natural Rubber
2. E – EPDM
3. N – Nitrile
4. V – FKM

Lid material glass

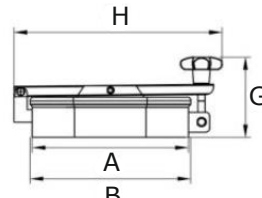
Dimensions are provided in good faith but may be subject to change, if dimensions are critical please call the office to confirm all sizes before placing an order.

DS Oval Manways V 1.3

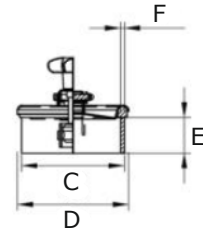
\*Viton® is a registered trade mark of Dupont Dow Elastomer.

Page No: 6

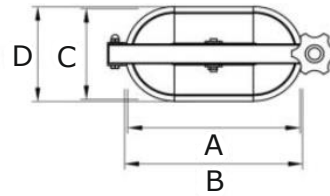
## M126 – Oval Manway – Outward Opening



Elevation Detail



Section Detail



Plan Detail

A (mm)	B (mm)	C (mm)	D (mm)	E (mm)	F (mm)	G (mm)	H (mm)	Working Pressure Range (bar)	Weight (kg)	Part No
288	300	153	165	60	6	140	398	+0.6	4.8	M126-A175-1531

**Materials:**

1. M126-A: 316L Stainless Steel
2. M126-C: 304L Stainless Steel

**Other materials also available:**

1. L – Natural Rubber
2. E – EPDM
3. N – Nitrile
4. V – FKM

Lid thickness 2 mm

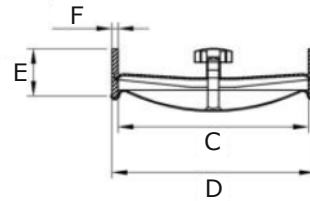
Dimensions are provided in good faith but may be subject to change, if dimensions are critical please call the office to confirm all sizes before placing an order.

DS Oval Manways V 1.3

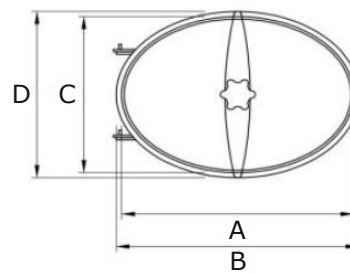
<sup>1</sup>Viton® is a registered trade mark of Dupont Dow Elastomer.

Page No: 7

## M125 – Oval Manway – Inward Opening



Section Detail



Plan Detail

A (mm)	B (mm)	C (mm)	D (mm)	E (mm)	F (mm)	G (mm)	H (mm)	Working Pressure Range (bar)	Weight (kg)	Part No
436	456	308	328	70	10	~	~	3.0	10.0	<a href="#">M125-A09-3081</a>
440	452	310	322	60	6	~	~	3.0	7.0	<a href="#">M125-A10-3101</a>
440	456	310	336	60	8	~	~	3.0	8.0	<a href="#">M125-A10-3102</a>
440	456	310	336	80	8	~	~	3.0	10.0	<a href="#">M125-A10-3103</a>
440	456	310	336	160	8	~	~	3.0	-	<a href="#">M125-A10-3104</a>

**Materials:**

1. M125-A: 316L Stainless Steel
2. M125-C: 304L Stainless Steel

**Other materials also available:**

1. L – Natural Rubber
2. E – EPDM
3. N – Nitrile
4. V – FKM

Lid thickness 2 mm

Dimensions are provided in good faith but may be subject to change, if dimensions are critical please call the office to confirm all sizes before placing an order.

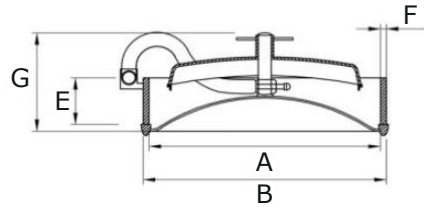
[DS Oval Manways V 1.3](#)

<sup>1</sup>Viton® is a registered trade mark of Dupont Dow Elastomer.

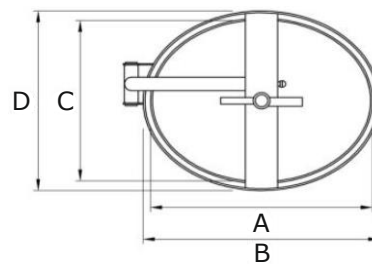
Page No: 8



## M125 – Oval Manway – Inward Opening – PED Approved



Section Detail



Plan Detail

A (mm)	B (mm)	C (mm)	D (mm)	E (mm)	F (mm)	G (mm)		Working Pressure Range (bar)	Weight (kg)	Part No
475	499	360	384	100	12	276		4.0	26.0	<a href="#">M125-A11-3601</a>
475	499	360	384	100	12	276		9.0	28.0	<a href="#">M125-A11-3602</a>
475	499	360	384	100	12	276		15.0	36.0	<a href="#">M125-A11-3603</a>

**Materials:**

1. M125-A: 316L Stainless Steel
2. M125-C: 304L Stainless Steel

**Other materials also available:**

1. L – Natural Rubber
2. E – EPDM
3. N – Nitrile
4. V – FKM

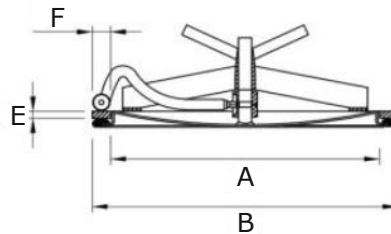
Dimensions are provided in good faith but may be subject to change, if dimensions are critical please call the office to confirm all sizes before placing an order.

[DS Oval Manways V 1.3](#)

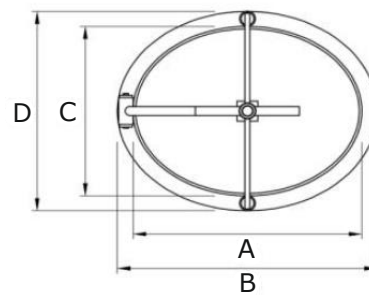
<sup>1</sup>Viton® is a registered trade mark of Dupont Dow Elastomer.

Page No: 9

## M125 – Oval Manway – Inward Opening



Section Detail



Plan Detail

A (mm)	B (mm)	C (mm)	D (mm)	E (mm)	F (mm)	Lid (mm)	H (mm)	Working Pressure Range (bar)	Weight (kg)	Part No
446	516	340	406	8	35	3	208	3.8	13.0	<a href="#">M125-A01-3401</a>
446	516	340	406	12	35	3	208	3.8	15.0	<a href="#">M125-A01-3402</a>
446	516	340	406	10	35	3	208	3.8	~	<a href="#">M125-A01-3403</a>
440	500	340	400	12	30	3	205	3.2	12.0	<a href="#">M125-A02-3401</a>
445	505	310	370	10	30	3	148	3.2	9.0	<a href="#">M125-A03-3101</a>
445	505	310	370	12	30	3	148	3.2	9.0	<a href="#">M125-A03-3102</a>

**Materials:**

1. M125-A: 316L Stainless Steel
2. M125-C: 304L Stainless Steel

**Other materials also available:**

1. L – Natural Rubber
2. E – EPDM
3. N – Nitrile
4. V – FKM

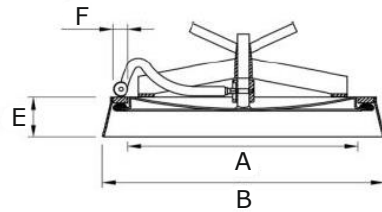
Dimensions are provided in good faith but may be subject to change, if dimensions are critical please call the office to confirm all sizes before placing an order.

DS Oval Manways V 1.3

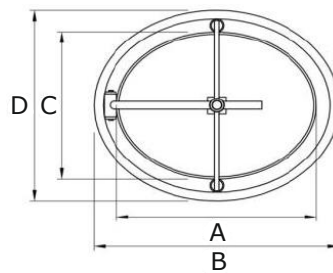
\*Viton® is a registered trade mark of Dupont Dow Elastomer.

Page No: 10

## M125 – Oval Manway – Inward Opening



Section Detail



Plan Detail

A (mm)	B (mm)	C (mm)	D (mm)	E (mm)	F (mm)	Lid (mm)	H (mm)	Working Pressure Range (bar)	Weight (kg)	Part No
440	543	340	448	80	30	3	248	3.2	16.0	<a href="#">M125-A04-3401</a>
440	543	340	448	160	30	3	328	3.2	~	<a href="#">M125-A04-3402</a>
445	543	310	408	80	30	2.5	181.5	3.2	12.0	<a href="#">M125-A05-3101</a>
445	543	310	408	120	30	2.5	221.5	3.2	~	<a href="#">M125-A05-3102</a>
445	543	310	408	160	30	2.5	261.5	3.2	~	<a href="#">M125-A05-3103</a>

**Materials:**

1. M125-A: 316L Stainless Steel
2. M125-C: 304L Stainless Steel

**Other materials also available:**

1. L – Natural Rubber
2. E – EPDM
3. N – Nitrile
4. V – FKM

Dimensions are provided in good faith but may be subject to change, if dimensions are critical please call the office to confirm all sizes before placing an order.

DS Oval Manways V 1.3

\*Viton® is a registered trade mark of Dupont Dow Elastomer.

Page No: 11