

Thick Walled Tank Ferrules

The Clamp system is now common place in the Hygienic and Sanitary Industries. Our range of tank ferrules and schedule clamp ferrules was developed to meet the growing need for material compatibility and pipe and vessel wall thickness alignment. Our tank ferrules are offered in 316L stainless steel as standard and additionally can be offered in ASTM A182, A276 and even ASTM A479 & A249, to match boiler specifications.



Related Standards:

ASME BPE-2002
BS 4825 Part 3 / ISO 2037
DIN 32676
DIN11864-3
3A Standard
ISO 2852 and SMS 3017
SMS 3008
ISO 1127 schedule pipe size
BS 6362 schedule pipe size
ASTM A312 schedule pipe

Options:

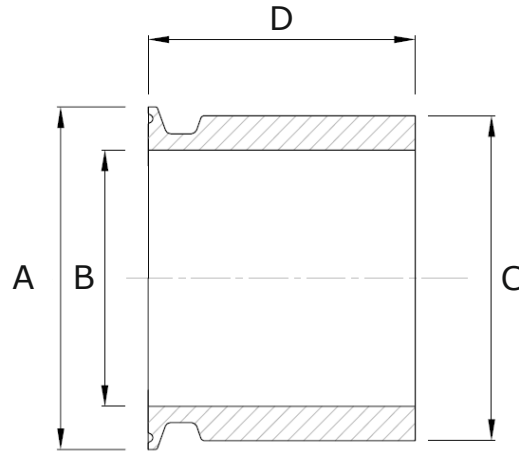
- Thick walled ferrules, matched with tank walls for pressure and vacuum rating
- 316L ASTM A240-78 stainless steel material and to EN 10088-3:1995
- Extended lengths produced to suit jacketed vessels
- 0.5 μM Ra internal surface finish offered as standard
- Full range of FDA compatible seal materials available
- ASTM A213 Schedule 5, 10 and 40 sizes offered
- Exotic materials available such as Titanium, Alloy C22 & C276, Alloy 400, Nylon, Polypropylene and ABS
- Electro polishing is available for high surface finish
- Material certification to EN 10204 3.1
- Additional Standards BS 4825, DIN 32676, SMS 3017, ISO 2852 and ISO 1127

Dimensions are provided in good faith but may be subject to change; if dimensions are critical please call the office to confirm all sizes before placing an order.

DS: Clamp Tank Ferrules V1.6

Page No: 1

3010 - Tank Ferrule - Heavy Section



Size	A	B	C	D	Wall Thickness	Part No
1/2"	25.0	9.5	16.70	51.0	3.60	3010-A013
3/4"	25.0	15.8	23.05	51.0	3.60	3010-A019
1"	50.4	22.2	34.90	63.5	6.35	3010-A026
1.1/2"	50.4	34.9	47.60	63.5	6.35	3010-A038
2"	63.9	47.6	60.30	76.2	6.35	3010-A051
2.1/2"	77.4	60.3	73.30	76.2	6.50	3010-A064
3"	90.9	73.0	85.70	101.6	6.35	3010-A076
4"	118.9	97.5	110.40	101.6	6.45	3010-A102
5"	144.4	125.0	138.00	101.6	6.50	3010-A129
6"	166.9	146.8	159.80	101.6	6.50	3010-A154
8"	217.7	197.7	210.70	76.2	6.50	3010-A204
10"	268.5	247.2	260.20	76.2	6.50	3010-A254
12"	319.5	298.0	311.00	76.2	6.50	3010-A304
Notes: Surface Finish 0.5 µM Ra internal and Satin finish external Other sizes available on request						

Dimensions are provided in good faith but may be subject to change; if dimensions are critical please call the office to confirm all sizes before placing an order.