

High Pressure Circular Manways

High pressure manways are now common place in the Pharmaceutical, Biotech, Food, Dairy and Beverage industries. Manufactured as standard from 316L stainless steel, our high pressure manways offer the following features and options:

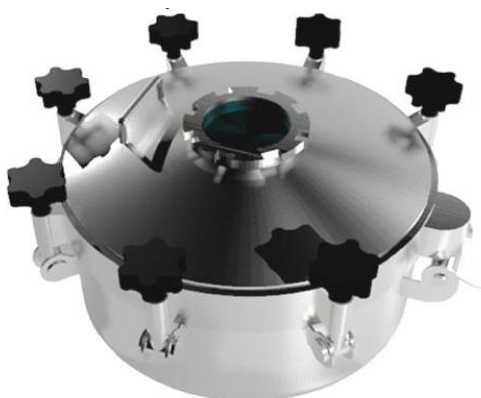
- Sizes - from \varnothing 150mm through to \varnothing 800mm
- Material - 316L and 304L stainless steel
- 15 Bar - working pressures and full vacuum rating on smaller diameters
- Material - certification to EN 10204 3.1
- PED 97/23/CE - certification to the European Pressure Directive
- FDA approved seal materials, including silicone, EPDM, FEP and FKM encapsulated
- Welding procedures and approvals to EN 288.3 and EN 287.7 and ASME QW-484

Options

- Spring assisted hinges on large doors
- Surface finishes to 0.4 μ M Ra available to order
- Internal security grid and wire crosses
- Range of nylon handles or stainless steel wing nuts
- Extended neck rings to form small vessel walls

Fabrication

A full fabrication service is offered for our manways, including sight glasses, charge ports, inspection hatches and pressure relief valves. The manways can also be fabricated to form reactor vessels where the neck rings are extended to form the body of the vessel.

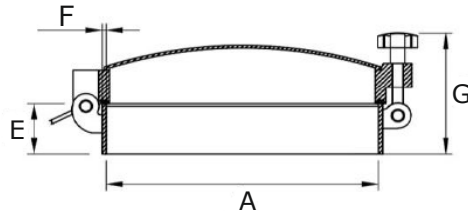


Dimensions are provided in good faith but may be subject to change, if dimensions are critical please call the office to confirm all sizes before placing an order.

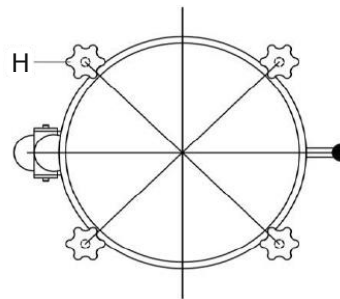
[DS High Pressure Circular Manways V 1.2](#)

Page No: 1

M129-A02 – Circular Pressure Manway – Outward Opening (Non PED)



Section Detail



Plan Detail

A (mm)	B (mm)	C (mm)	D (mm)	E (mm)	F (mm)	G (mm)	H (handles)	Working Pressure Range (bar)	Weight (kg)	Part No
154	~	~	~	96	8	210	3	-1.0 / +15.0	9.2	M129-A02-15015
202	~	~	~	96	8	210	4	-1.0 / +15.0	13.5	M129-A02-20015
250	~	~	~	96	8	210	4	-1.0 / +15.0	16.4	M129-A02-25015
310	~	~	~	100	6	210	4	-1.0 / +1.0	15.7	M129-A02-3001
410	~	~	~	100	6	210	4	-1.0 / +1.0	19.3	M129-A02-4001
460	~	~	~	100	6	210	4	-1.0 / +1.0	21.8	M129-A02-4501
510	~	~	~	100	6	210	4	-1.0 / +1.0	24.5	M129-A02-5001
610	~	~	~	100	6	210	6	-1.0 / +1.0	30.0	M129-A02-6001
700	~	~	~	100	6	210	8	-1.0 / +1.0	~	M129-A02-7001
800	~	~	~	100	6	210	8	-1.0 / +1.0	~	M129-A02-8001

Materials:

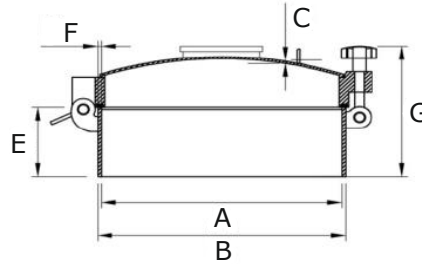
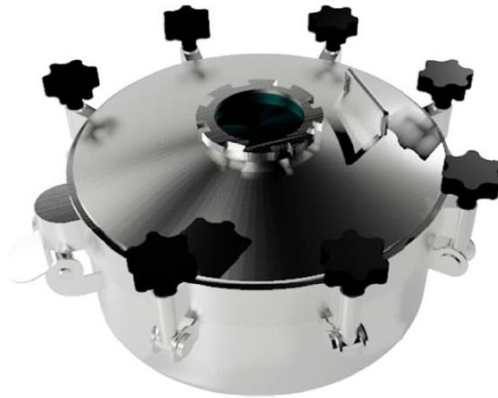
1. M129-A: 316L Stainless Steel
2. M129-C: 304L Stainless Steel

Other materials also available:

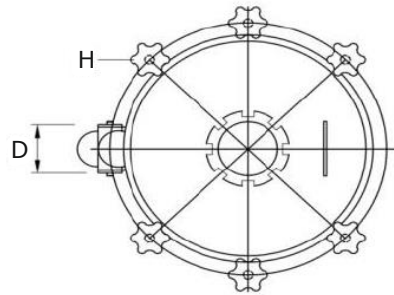
1. L – Natural Rubber
2. E – EPDM
3. N – Nitrile
4. V – FKM

Dimensions are provided in good faith but may be subject to change, if dimensions are critical please call the office to confirm all sizes before placing an order.

M129-A03 – Circular Pressure Manway – Outward Opening (Non PED)



Section Detail



Plan Detail

A (mm)	B (mm)	C (mm)	D (mm)	E (mm)	F (mm)	G (mm)	H (handles)	Working Pressure Range (bar)	Weight (kg)	Part No
300	308	4	72	150	4	~	4	-1.0 / +4.0	17.0	M129-A03-3004
300	308	4	72	150	4	~	6	-1.0 / +6.0	19.3	M129-A03-3006
400	408	4	72	150	4	~	4	-1.0 / +4.0	23.7	M129-A03-4004
400	408	4	72	150	4	~	6	-1.0 / +6.0	26.0	M129-A03-4006
450	458	4	72	150	4	~	6	-1.0 / +4.0	29.3	M129-A03-4504
450	458	4	72	150	4	~	8	-1.0 / +6.0	31.6	M129-A03-4506
500	508	4	72	150	4	~	6	-1.0 / +3.0	33.3	M129-A03-5003
500	508	4	72	150	4	~	8	-1.0 / +6.0	35.6	M129-A03-5006
600	608	4	72	150	4	~	6	-1.0 / +2.0	37.3	M129-A03-6002
600	608	4	72	150	4	~	8	-1.0 / +4.0	39.6	M129-A03-6004
700	708	4	72	150	4	~	6	-1.0 / +1.0	~	M129-A03-7001
700	708	4	72	150	4	~	8	-1.0 / +2.0	~	M129-A03-7002
800	808	4	72	150	4	~	8	-1.0 / +1.0	~	M129-A03-8001
800	808	4	72	150	4	~	10	-1.0 / +2.0	~	M129-A03-8002

Materials:

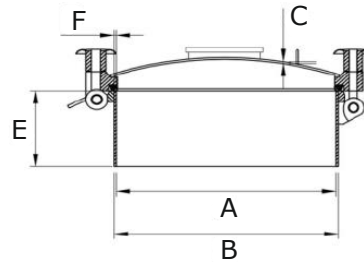
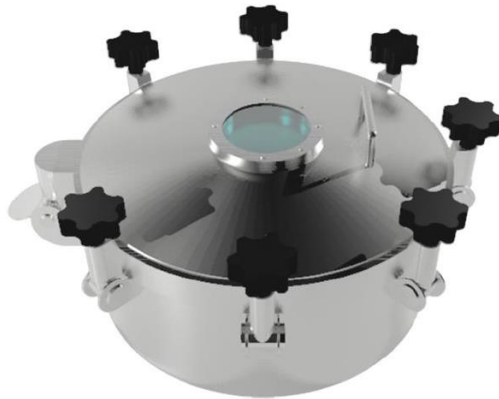
1. M129-A: 316L Stainless Steel
2. M129-C: 304L Stainless Steel

Other materials also available:

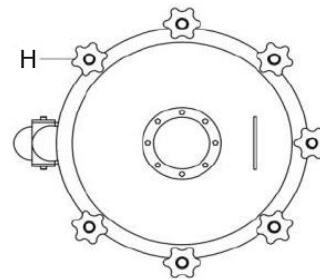
1. L – Natural Rubber
2. E – EPDM
3. N – Nitrile
4. V – FKM

Dimensions are provided in good faith but may be subject to change, if dimensions are critical please call the office to confirm all sizes before placing an order.

M129-A13/25 – Circular High Pressure Manway Outward Opening (PED Approved)



Section Detail



Plan Detail

A (mm)	B (mm)	C (mm)	D (mm)	E (mm)	F (mm)	G (mm)	H (handles)	Working Pressure Range 150 C (bar)	Weight (kg)	Part No
300	312	4	~	100	6	~	4	-1.0 / +1.0	~	M129-A25-3001
300	308	4	~	150	4	~	4	-1.0 / +4.0	~	M129-A13-3004
300	308	4	~	150	4	~	6	-1.0 / +7.5	~	M129-A13-3008
300	308	5	~	150	4	~	8	-1.0 / +9.0	~	M129-A13-3009
400	412	4	~	100	6	~	4	-1.0 / +1.0	~	M129-A25-4001
400	408	4	~	150	4	~	4	-1.0 / +1.5	~	M129-A13-4002
400	408	4	~	150	4	~	6	-1.0 / +4.0	~	M129-A13-4004
400	408	4	~	150	4	~	8	-1.0 / +6.0	~	M129-A13-4006
400	408	4	~	150	4	~	10	-1.0 / +7.5	~	M129-A13-4008
400	408	5	~	150	5	~	12	-1.0 / +8.5	~	M129-A13-4009
450	462	4	~	100	6	~	4	-1.0 / +1.0	~	M129-A25-4501
450	458	4	~	150	4	~	4	-1.0 / +1.0	~	M129-A13-4501
450	458	4	~	150	4	~	6	-1.0 / +3.0	~	M129-A13-4503
450	458	4	~	150	4	~	8	-1.0 / +4.5	~	M129-A13-4505
450	458	4	~	150	4	~	10	-1.0 / +6.0	~	M129-A13-4506
450	458	4	~	150	4	~	12	-1.0 / +7.0	~	M129-A13-4507

Materials:

1. M129-A: 316L Stainless Steel
2. M129-C: 304L Stainless Steel

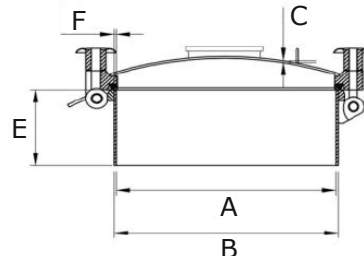
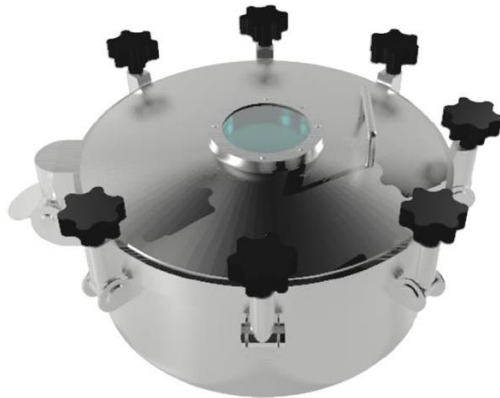
Other materials also available:

1. L – Natural Rubber
2. E – EPDM
3. N – Nitrile
4. V – FKM

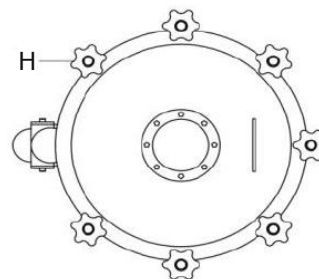
With or Without sight glass

Dimensions are provided in good faith but may be subject to change, if dimensions are critical please call the office to confirm all sizes before placing an order.

M129-A13/25 – Circular High Pressure Manway Outward Opening (PED Approved)



Section Detail



Plan Detail

A (mm)	B (mm)	C (mm)	D (mm)	E (mm)	F (mm)	G (mm)	H (handles)	Working Pressure Range (bar)	Weight (kg)	Part No
500	512	4	~	100	6	~	6	-1.0 / +1.0	~	M129-A25-5001
500	508	4	~	150	4	~	4	-1.0 / +1.0	~	M129-A13-5001
500	508	4	~	150	4	~	6	-1.0 / +2.0	~	M129-A13-5002
500	508	4	~	150	4	~	8	-1.0 / +3.5	~	M129-A13-5004
500	508	4	~	150	4	~	10	-1.0 / +4.5	~	M129-A13-5005
500	508	4	~	150	4	~	12	-1.0 / +5.5	~	M129-A13-5006
500	508	4	~	150	4	~	14	-1.0 / +6.5	~	M129-A13-5007
600	612	4	~	100	6	~	6	-1.0 / +1.0	~	M129-A25-6001
600	608	4	~	150	4	~	6	-1.0 / +1.0	~	M129-A13-6001
600	608	4	~	150	4	~	8	-1.0 / +2.0	~	M129-A13-6002
600	608	4	~	150	4	~	10	-1.0 / +3.5	~	M129-A13-6003
600	608	4	~	150	4	~	12	-1.0 / +4.0	~	M129-A13-6004
600	608	4	~	150	4	~	14	-1.0 / +4.5	~	M129-A13-6005
700	712	4	~	100	6	~	8	-1.0 / +1.0	~	M129-A25-7001
700	708	4	~	150	4	~	6	-1.0 / +1.0	~	M129-A13-7001
700	708	4	~	150	4	~	8	-1.0 / +1.5	~	M129-A13-70015
700	708	4	~	150	4	~	10	-1.0 / +2.0	~	M129-A13-7002
700	708	4	~	150	4	~	12	-1.0 / +3.0	~	M129-A13-7003
700	708	4	~	150	4	~	14	-1.0 / +3.5	~	M129-A13-70035

Materials:

1. M129-A: 316L Stainless Steel
2. M129-C: 304L Stainless Steel

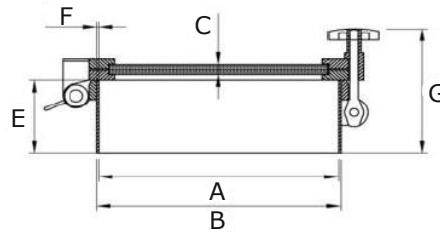
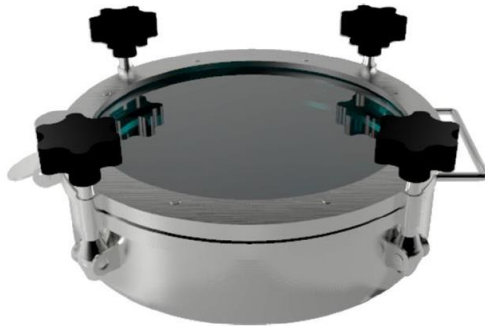
Other materials also available:

1. L – Natural Rubber
2. E – EPDM
3. N – Nitrile
4. V – FKM

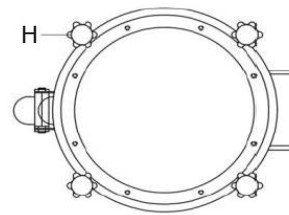
With or Without sight glass.

Dimensions are provided in good faith but may be subject to change, if dimensions are critical please call the office to confirm all sizes before placing an order.

M12D-A26 – High Pressure Sightglass Manway (Non PED)



Section Detail



Plan Detail

A (mm)	B (mm)	C (mm)	D (mm)	E (mm)	F (mm)	G (mm)	H (handles)	Working Pressure Range (bar)	Weight (kg)	Part No
202	218	15	~	96	8	~	4	~	15.3	M12D-A26-200
250	266	15	~	96	8	~	4	~	17.9	M12D-A26-250
300	308	15	~	150	4	255	4	-1.0 / +3.0	21.0	M12D-A26-3003
400	408	15	~	150	4	255	4	-1.0 / +3.0	~	M12D-A26-4003
450	458	15	~	150	4	255	4	-1.0 / +3.0	~	M12D-A26-4503
500	508	15	~	150	4	255	6	-1.0 / +2.0	36.5	M12D-A26-5002
600	608	15	~	150	4	255	6	-1.0 / +2.0	~	M12D-A26-6002

Materials:

1. M12D-A: 316L Stainless Steel
2. M12D-C: 304L Stainless Steel

Other materials also available:

1. L – Natural Rubber
2. E – EPDM
3. N – Nitrile
4. V – FKM

Lid with sight glass

Dimensions are provided in good faith but may be subject to change, if dimensions are critical please call the office to confirm all sizes before placing an order.