

F11P – Flanged Circular Sight Glass

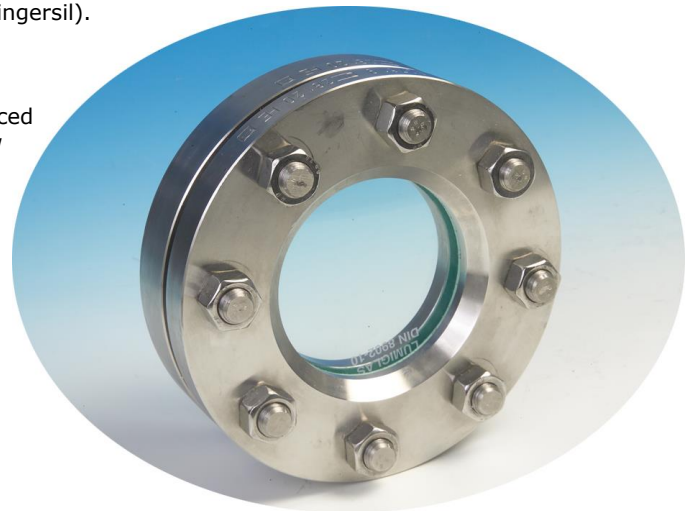
Alchem Process offers a complete range of flanged sight glass assemblies, from low pressure atmospheric units to DIN 28120 PN2.5, PN6, PN 10 and 16 bar high pressure arrangements.

We offer a range of sizes from the DN50 to DN200 in different pressure ratings which makes this product attractive to an array of industrial applications in the petro-chemical & fine chemical industries, process & industrial pipelines, pressure vessels, tanks, mixers and silos.

The base flange is welded into the vessel while the 304SS cover flange sandwiches the view glass panel safely between the "Wet" hygienic process seal and the "Dry" upper seal (Klingersil).

Used widely in the food, dairy, beverage, cosmetic and pharmaceutical industries, these units can be enhanced by the addition of optional wiper assemblies and also low voltage 24v/IP 65 sight & light assemblies.

Sight and light glass arrangements can be combined in one integral "Sight / Light Glass" assembly or used in tandem; one with the light and the separate unit to view.



General:

Size range from DN50 to DN200

View glass diameter from Ø80 to 225mm

Working temperatures up to 150°C with toughened soda lime glass, while 280°C is possible with toughened borosilicate glass (DIN 8902).

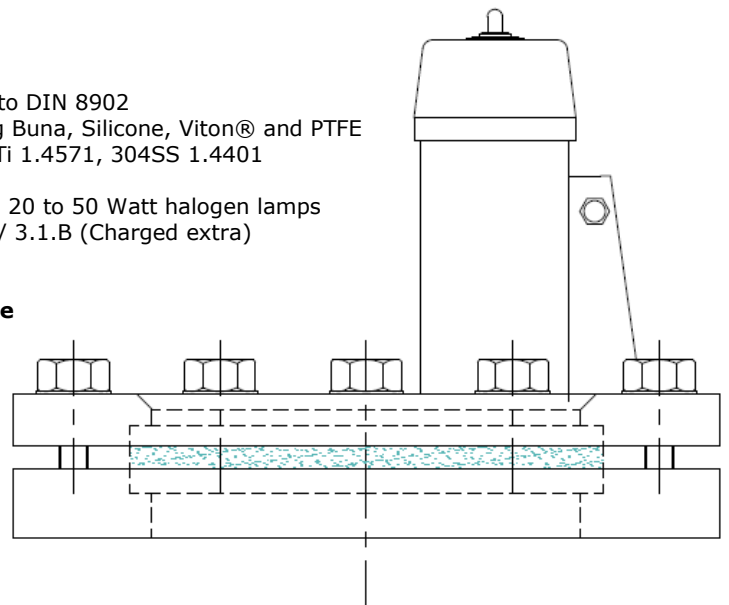
Operating pressures from atmospheric to 16bar, with higher pressures available on request.

The sight glass is suitable for vacuum use.
(Please check at enquiry stage).

Options:

- Soda lime and borosilicate glass view ports to DIN 8902
- Range of food grade seal materials including Buna, Silicone, Viton® and PTFE
- Wetted parts available in 316L 1.4404, 316Ti 1.4571, 304SS 1.4401 and exotic alloys such as Inconel and Hastelloy C.
- IP65 rated low voltage 24v / 12V lights with 20 to 50 Watt halogen lamps
- Material test certificates to EN 10204 3.1.A / 3.1.B (Charged extra)

Low voltage assemblies are only suitable for use in non explosive hazardous areas.



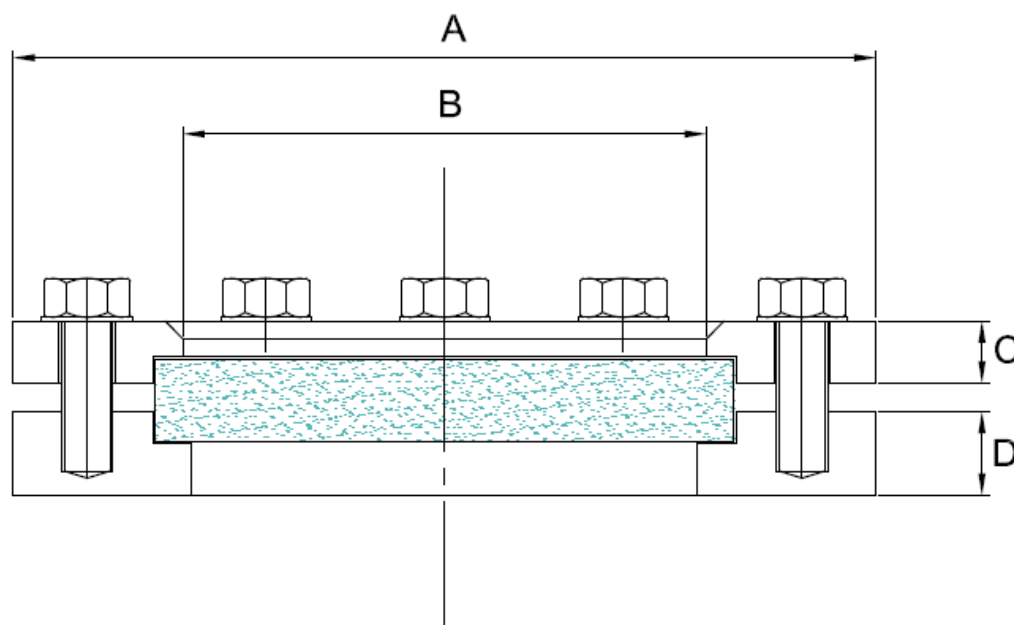
Viton® is a registered trade name of DuPont.

Dimensions are provided in good faith but may be subject to change, if dimensions are critical please call the office to confirm all sizes before placing an order.

[DS F11P – Flange Sight Glass V 1.3](#)

Page No: 1

F11P – Flanged Sight Glass Assembly – 2.5 Bar



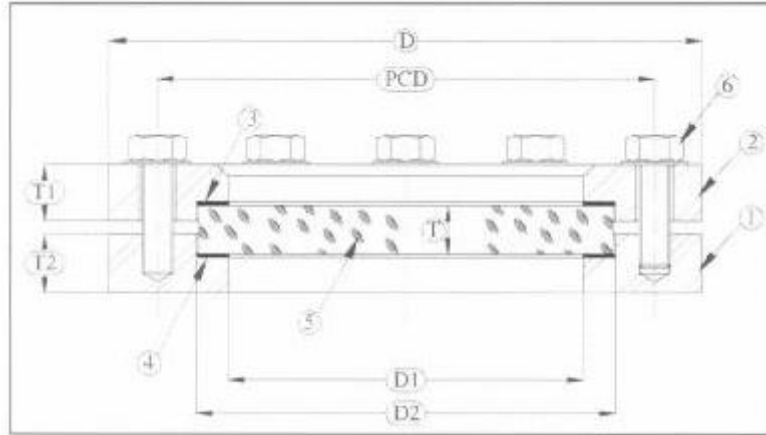
| Size | Working Pressure (Bar) | A | B | C | D | Glass Thickness | PCD | Bolts | Torque Nm |
|------|------------------------|-----|-----|----|----|-----------------|-----|---------|-----------|
| 50 | 2.5 | 150 | 80 | 16 | 24 | 10 | 125 | 4 x M12 | 28 |
| 80 | 2.5 | 175 | 100 | 16 | 24 | 15 | 150 | 4 x M12 | 20 |
| 100 | 2.5 | 200 | 125 | 16 | 24 | 15 | 175 | 4 x M12 | 26 |
| 125 | 2.5 | 225 | 150 | 14 | 24 | 15 | 200 | 8 x M12 | 32 |
| 150 | 2.5 | 250 | 175 | 14 | 24 | 20 | 225 | 8 x M12 | 47 |
| 200 | 2.5 | 300 | 225 | 12 | 24 | 20 | 275 | 8 x M12 | 63 |

Options:

DIN 28120 PN 6, PN10 and PN 16 also available

Dimensions are provided in good faith but may be subject to change, if dimensions are critical please call the office to confirm all sizes before placing an order.

F11P - DIN 28210 Flanged Sight Glass



| NB | Max Working Press (Bar) | View Diameter D1 | Sight Glass Disc Detail | | Base (Pad) Flange and Cover Flange | | | | Bolt and Stud Detail | | |
|-----|-------------------------|------------------|-------------------------|----|------------------------------------|-----|----|----|----------------------|------|--------|
| | | | D2 | T | D | PDC | T1 | T2 | Number | Size | Torque |
| 50 | 6 | 80 | 100 | 10 | 165 | 125 | 16 | 30 | 4 | M16 | 28Nm |
| | 10 | | | 15 | | | | | | | |
| | 16 | | | 15 | | | | | | | |
| 80 | 6 | 100 | 125 | 15 | 200 | 160 | 18 | 30 | 4 | M16 | 20Nm |
| | 10 | | | 15 | | | 20 | | 8 | | |
| | 16 | | | 20 | | | 20 | | 8 | | |
| 100 | 6 | 125 | 150 | 15 | 220 | 180 | 18 | 30 | 8 | M16 | 26Nm |
| | 10 | | | 20 | | | 22 | | | | |
| | 16 | | | 25 | | | 22 | | | | |
| 125 | 6 | 150 | 175 | 20 | 250 | 210 | 18 | 30 | 8 | M16 | 32Nm |
| | 10 | | | 20 | | | 25 | | | | |
| | 16 | | | 25 | | | 25 | | | | |
| 150 | 6 | 175 | 200 | 20 | 285 | 240 | 18 | 36 | 8 | M20 | 47Nm |
| | 10 | | | 25 | | | 30 | | | | |
| | 16 | | | 30 | | | 30 | | | | |
| 200 | 6 | 225 | 250 | 25 | 340 | 295 | 20 | 36 | 8 | M20 | 63Nm |
| | 10 | | | 30 | | | 35 | | | | |

Dimensions are provided in good faith but may be subject to change, if dimensions are critical please call the office to confirm all sizes before placing an order.