

Data Sheet

209G - Pressure Relief Valve

The adjustable pressure relief valve was originally designed as a safety device to offer a degree of control near heat exchangers. The valve has proved particularly useful when used in systems with flow restricting valves such as plug cocks and non return valves and also with pressure inducing plant such as homogenisers and positive displacement pumps.

The valve is particularly useful in applications where an exact pressure must be maintained using electronic equipment, where the valve remains independent to the electronics and prevents any overloading pressure build up.

The standard pressure rating is adjustable between 0 & 5 Bar (1" to 2 ½"), however special springs are available with up to 25 Bar possible for the 1" valve.

The valve is manufactured with 316L stainless steel wetted parts and we would recommend the use of a soft seal such as Silicone or EPDM, in preference to PTFE.

Where CIP is to be carried out near the valves upper pressure limit, we would recommend that a pressure relief valve with a manual override handle is considered.

Size range:

1" to 3"

Standard Pressure Range:

1"	-	0 – 5 Bar (Maximum 25 Bar)
1½"	-	0 – 5 Bar (Maximum 12 Bar)
2"	-	0 – 5 Bar (Maximum 12 Bar)
2½"	-	0 – 5 Bar (Maximum 12 Bar)
3"	-	0 – 4 Bar (TBA)

End Connections:

Plain weld end, Tri-Clamp, RJT, IDF, DIN 11851, ILC, SMS and BSP

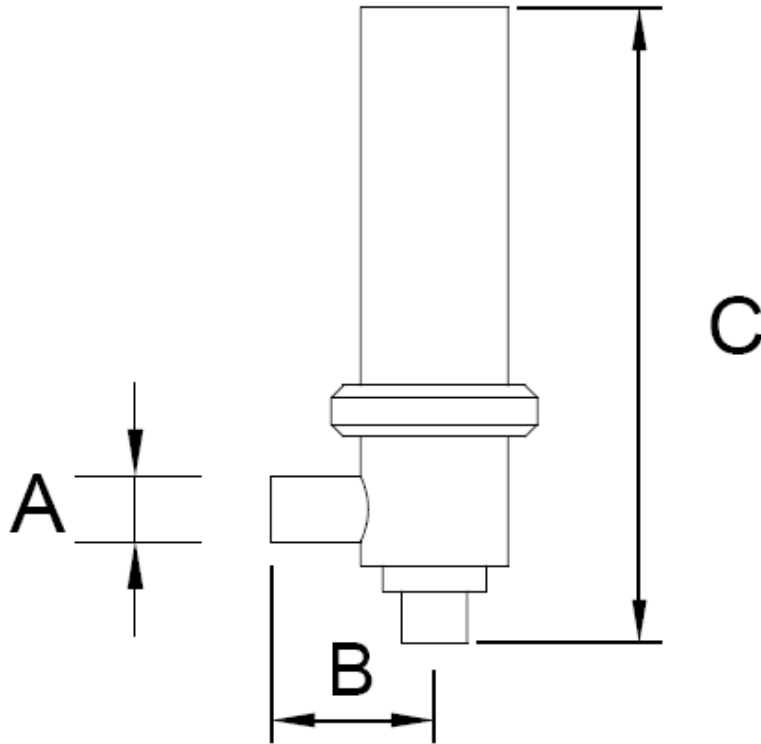
Seal Materials:

Silicone, EPDM and Viton
PTFE is also available, but not recommended



Data Sheet

209G - Pressure Relief Valve – Plain Ended



Adjustable Pressure Relief Valve

Additional Springs available for higher pressure adjustments

Size	A	B	C	Press. Range Bar	Part No
1"	25.4	60.0	163.0	0 - 5	209G-A026
1½"	38.1	60.0	168.5	0 - 5	209G-A038
2"	50.8	70.0	178.0	0 - 5	209G-A051
2½"	63.5	80.0	207.0	0 - 5	209G-A064
3"	76.2	90.0	210.0	0 - 4	209G-A076

Seal Materials

1. Silicone
2. EPDM
3. Viton
4. PTFE (Not recommended)